

ANNUAL REPORT OF ALC LEP/CBR PROJECT 2014

INTRODUCTION

Assisi Leprosy center (ALC) is a voluntary organization which was working for the development of National Leprosy Eradication programme (NLEP) since 1995 in two remote Taluks of Bellary district of Karnataka state in India. With the continues efforts and hard work of the Project staff the prevalence rate is reduced to 7/1000 by the year 2003. Since there the work is integrated with the works of Primary Health Centers (PHC) of respective Taluks. As the ALC project working among the leprosy affected persons it noticed many disabled who live isolated and rejected in the society. So to provide comprehensive rehabilitation service to this less privileged of the society, ALC introduced community Based Rehabilitation (CBR) programme in the year 1997 in HB halli taluk. The project extended its service to Huvinahadagali Taluk in 2003. The project covers 229 villages of both taluks. Project aiming at providing equal opportunity to protect and promote the human rights of People with Disability (PWD) having in mind their total integration to the main streams of the society.

OBJECTIVE OF THE PROJECT

1. To remove all kinds barriers which block people with disability from access to the main streams of society by planning disability issues to the main streams of society.
2. To the involvement of PWD as an active contributions to the CBR programme i.e., policy making, implementation and evaluation of the activities.
3. To make the PWD to take leadership, decision making and to improve and expose their potential and talents.
4. To improve social inclusion, overcome activity limitation and participation restrictions to improve the quality of life of PWD
5. To encourage community members and family to provide appropriate care and support to PWD through awareness and curricular activities.
6. To facilitate the SHG of PWD and PAL with the knowledge of Govt benefits and schemes which is their rights and fight for it.

SITUATIONAL ANALYSIS

The ALC project extends its service to 109 villages in HB halli and 220 in Huvinahadahalli Taluks through community based rehabilitation for people with disability and persons affected by leprosy. These two taluks are the most remote and poor taluks of Bellary District. The region has no seasonal rainfalls which cause droughts and poverty as the people depend on the seasonal rains to cultivate crops. In such occasions people migrate to other places for work, leaving the children , old people and disabled at home . Low literacy rate, poor sanitation, lack of transportation, scarcity of water, poor health care facilities leading people to a pitiable condition and low slandered of living.

Devadasi system (a superstitious and unhealthy sexual practice in the name of God), child marriages and other superstitious beliefs still existing. Consayunity (marriage between close relations) for economic benefits are common in the target area are the major social and cultural challenges which the target area faces currently

PROFILE OF THE TARGET AREA

	HB halli	Hadagalli
Total population	165585	183134
Total villages	109	120
Persons with disability	2158	2519
Persons treated for leprosy	2207	1994
No. of PHC	8	8

In the beginning of the project there were good number of PA L with prevalence rate of 23/1000. Child and deformity cases were so high . ignorance about leprosy and its complications made PAL and common man to a miserable life .Because of social stigma people were not cooperating and not regular

for treatment in the beginning of the project which increased the number of leprosy patients.

But project motivated the people ,family and PAL by regular field visit awareness programme street play, TV show wall writing ,group talk, etc. Slowly people cooperated with the project by voluntary reporting ,referring and medications. The project were able to gain its goal by reducing the prevalence rate to 7/1000 before the leprosy education programme integrated to the primary centre. Now project is more concentrating to rehabilitate the PAL,PWD and poor

women to the main streams of the society . In order to bring the PAL and PWD to main streams project gives awareness about their different abilities, talents and potential by conducting competitions, giving employment and forming them into small groups [SHG].Project is able to implement CBR and other works more effectively in collaboration with government and other non-governmental organizations. Fourteen years of ALC's experience in the field of leprosy and CBR collaboration, support and encouragement which the project staff receives from the PWD, family ,PAL, community and other NGO are great significance and gives more enthusiasm. It is proud to mention that ALC project is well known in the target area including the various govt. offices in the District.

Sex and age wise Disability statistics 2014

HB halli taluk

Type of disability	Children 0--5 yrs		6--15 yrs		Adults 16--35 yrs		36 and above		total		G.Total
	M	F	M	F	M	F	M	F	M	F	
OH	138	99	378	291	219	164	105	59	838	615	1453
SH	21	12	50	59	47	32	15	10	173	113	286
VI	17	12	74	46	38	26	19	10	148	94	242
MR	5	8	63	46	32	24	7	4	107	82	189
MI	-	-	-	-	8	6	5	3	13	9	22
HD	-	-	-	-	26	30	49	21	75	51	126
CP	6	10	4	2	3	3	-	-	13	15	28
MD	5	3	5	8	7	2	9	3	26	16	42
Total	192	44	14	52	80	87	09	10	1393	995	2388

Hadagali Taluk

	M	F	M	F	M	F	M	F	M	F	
OH	348	25	172	161	431	365	216	122	855	673	1528
SH	12	8	22	71	75	78	33	29	143	185	328
VI	2	8	38	34	67	32	38	28	145	102	247
MR	9	9	52	37	74	49	13	8	148	103	251
MI	-	-	-	-	9	11	16	15	25	26	51
HD	-	-	3	3	20	15	50	17	73	35	108
CP	16	18	41	26	12	2	4	9	73	55	128
Total	387	68	328	332	688	552	370	228	1462	1179	2641

RESOURCES OF THE TARGET AREA

RESOURCES	HB Halli	Hadagali	Total
B- ed college	0	1	1
T.C.H.college	1	1	2
Technical college	2	5	7
Degree college	1	1	2
PU college	7	12	19
High school	25	30	55
Higher Primary School	70	75	145
Lower Primary School	100	105	205
Anganavady	145	135	280
Special School	-		
Private School	12	15	27
PHC	13	14	27
PHU	7	6	13
Nursing Home&Private clinic	90	45	135
NGO	8	5	13

PROGRESS TO DATE

The ALC project has initiated in the year 1995 and has successfully completed its 15 years of service in the field of NLEP and CBR programme. The project endeavors came true by improving the quality of an individual by reducing the magnitude of disability providing proper rehabilitation and employment.

The salient features of this project is give an integrated ,independent life for PWD to foster the sense of dignity and self respect for PWD and PAL among the people by turn out of doors of social stigma.

The ALC brought down the prevalence rate of leprosy from 23/1000 to 7/1000 before the NLEP programme integrated to the Govt: PHC in 2003.The Project has treated 4261PAL in the target area and made RFT. Still ALC is continuing the NLEP programme by its own by identifying, referring and supervising the leprosy patients who are in treatment .Also project rehabilitated many PAL by giving economic support like sheep rearing, petty shop, tailoring machine, computer education and subsidy loan from the Taluk Panchayat etc .Aids and appliances also given the PAL for better mobility and to prevent secondary deformity.

The ALC had identified 2361 PWD in HB halli Taluk and 2625in Huvina hadagali Taluk. The needs of 4986 PWD including PAL were assessed and planned programme for further management. 37cases were referred for further treatment ,14 health camps 890 people attended and 20 assessment camps have been done to reach the medical facilities to the un reached and interior villages.80% of the PWD and PAL were able to get identity card and getting all the Govt: benefits .

780 differently motivated and 68 aids and appliances to improve mobility and for an independent life. In the beginning of the Project many were refused to use these supportive aids because of inferiority complex. But remarkable changes observed now, that many have come voluntarily asking for the aids and appliances using it regularly and properly by giving proper awareness to PWD, family and community. Now it is common scene in the target area that PWD are moving around with supportive aids. Project staff conducts nutrition camps giving awareness about health ,hygiene etc. to improve the health, prevent leprosy and other contagious diseases.

Project encourages education to the PWD and children affected by leprosy. These Children are supported by the Project by giving books, uniform, fees, tuitions etc. Non-formal education are being given to the uneducated women and men in the SHG and for PAL and PWD. Also Project encourages and motivates children for higher education who score higher percentages in the S.S.L.C. and P.U.C. level. Such children are coming up well and are working in the Govt: institutions. School based programme and awareness are given to the children to bring out their talents.

People affected with leprosy and PWD are rehabilitated economically by giving petty shop, vocational training like agarbathi, shampoo, fairness cream, candles etc. cottage industry [making basket with bamboo] sheep rearing ,animal husbandry, cycle and automobile punching, working in the IT companies ,Mines factory, constructing house etc. These PWD are working hard and earning their lively hood and investing small amount of money in the Bank. There are number of PWD and PAL who improved economically and became self-sufficient in their life. The Project helps PWD,PAL and poor women in the society to come forward in the public by involving in the social and political activities. To give awareness about the needs and rights these unprivileged to live as a human being ,Project conducting awareness programme, national and local celebrations like women's day, Independence day, Children's day, World disabled day and Anti leprosy day in the local and Taluk levels. As a result the members in the SHG come forward and approaches the project to celebrate it in the local villages inviting local leaders . The DPO and SHG are involved in all the activities concerning about disability. They fight for their rights through rallies, strikes, memorandum and so on. Now many PWD ,PAL and poor women in the villages come voluntarily to the Project asking support and guldens to form SHG to improve various aspects of life by seeing the activities of other SHG formed by the Project staff. These SHG's functions well and conducts programmes by their own expense. It gives much inspiration to the other SHG's.

Overview

Follow up services, medical interventions, educational facilities and economic support were provided for PWD, PAL and for their children . The project focused during the year 2013 specially on addressing the issues of PWD and PAL from different angles .Project made PWD and PAL as an active contributions to the CBR programme by making policies, taking decision, leadership and by implementing CBR in the village i.e., by helping each other to get Govt: benefits, forming into small groups[SHG] To get their active and full co-operation Project conducted many programme as follows.

HEALTH AND MEDICAL REHABILITATION

Health Talk Project staff given awareness about the importance of good health for a healthy life and nation. Importance of vaccination, medical care, hygiene, antenatal, prenatal, postnatal cares were explained in 220 villages by the staff

New Case Identification

New PWD are identified by the staff through regular field visit.27 New PWD's PAL17 were identified in HB halli and 16 PWD and 20... PAL in Huvinahadagali after which these PWD's are assessed and planned programme. The PAL are referred to the PHC for treatment. The parents are motivated by the project staff to care of their children and co -operate with the staff for further follow up

Follow up and Ulcer care

Medical interventions have been carried out by the project staff to improve the health condition of PWD and PAL. Ulcer care have been thought to the PAL in the village situation to avoid further complications. Counseling, management of severe disability were thought in practical. As a result parents are taken care of their children in better and responsible way .

Medical Camps

14 medical camps were conducted in HBhalli taluk and in Hadagalli taluk to which 1069 people turned up and had treatment. Also camps conducted keeping in mind to identify the new leprosy cases and to reach medical facilities to the un reached villages in the target area. Because of the benefits of the camps conducted, people are requesting for many more camps in the future

Nutrition Camp

8 nutrition camps were conducted in both taluks to improve the health of the children by giving awareness to the pregnant ladies and their family members 278 ladies including children attended the programme in which the staff prepared nutritious food. In the camp staff explained about the prevention of various diseases like leprosy, TB ,AIDS and disabilities by in taking the nutritious food

Physiotherapy

Physiotherapy is being done to 230 clients in different villages to improve their mobility, health strengthening and stretching of the muscles. Changes observed in 75 clients after doing physiotherapy regularly at home. some of these clients are very regular and interested in doing physiotherapy and bought physiotherapy materials for better performances

ADLS

Project staffs are giving ADLS training to 108 mentally challenged and visually impaired clients for independent life in the family 59 clients improved in their Daily Living Skills which lightened the burden of the family and their able to brush their teeth, comb the hair and washing the face etc.

Assessment camps

23 PAL and 225... PWD were taken to VIMS hospital for assessment from both Taluks to issue the identity card for their Govt benefits. The Project staff worked hard to get 225 Identity cards without giving any bribe to the doctors during the year. With this cards they are able to get their benefits like House, Bus pass, PHP, Subsidy loans ,Job placement etc .

Mobility Training

Mobility training is being given to 10 clients in different villages of the target area. Because many of the visually impaired and CP clients were not able to move around the house premises. 4 clients improved their mobility capacities and others are further getting trained for the same. Now they are confident to walk in and around the house and to the neighboring houses.

Speech therapy

Speech therapy is given to Speech and hearing clients to improve their speech. 85 clients are able to spell some words which are using in daily life.

MCR chapels

70 pairs of chapels have been given to the old leprosy patients who developed anesthesia and ulcer. Most of these PAL's are in old age and not able to earn their livelihood. So they are roaming around begging their daily bread which is the main cause to develop ulcer. In order to avoid further complications, Project issued MCR chapels.

P O D : The project staff motivated 285 PAL to take self care about anesthetic hands and feet by using chapels and other supportive materials in order to prevent deformity and further complications .

Surgery : With the help of the Project 33 polio affected children underwent rectifying surgeries like tendon release, Also 5 reconstructive surgeries done for leprosy deformed cases. After the surgery they are performing well by doing physiotherapy they increased mobility and muscle strength

Aids and appliances

After the need assessment, 68 clients were given aids and appliances in order to improve their mobility. 6 pairs of crutches 6 walking stick 3 white cane, and 2 pair of calipers 7 wheelchair 11 tricycle, artificial leg 2 were distributed with the help and good will of the donors who really understand the economic and physical conditions of these under privileged. Project is being grateful to these donors who resulted the better life of the disabled. After distributing the aids and appliance mobility training, awareness have been given to use them well.

EDUCATIONAL REHABILITATION

Integrated training conducted for 85 teachers from different taluks of Bellary District about Speech and Hearing and Mental retardation

NON- FORMAL EDUCATION: Non- formal education is given to 325 uneducated women and differently able people in the target area specially those who are in the SHG . Now they are able to write their name, address and putting their signature and able to read and write little by little. Also they come forward to go for their work in the bank and other government departments.

Tuition Centre : PWD children are giving tuition to the dropouts, poor and orphan children in different villages in collaboration with other NGO and conducting different types of course for the them.

SPECIAL SCHOOL: 6 children with disability are admitted in special schools during the year 2014 These children are improving academically and to utilize their skills. 9 Mentally challenged children who were sending to the special schools are performing well and able to do their activities of daily living. Parents are grateful to the project as well as to the management where they are studying.

SCHOLARSHIP: 110 Newly filled applications were send to get scholarship for the students with disability. Out of which 70 were sanctioned.

SUPPORT TO THE STUDENTS: 15 poor PWD students were supported by the project for their further studies. All these students are scoring higher percentages and one of them got state award for the quiz competition.

DISABLED FRIENDLY ACTIVITIES: The project staff visited 302 schools to know about the disabled friendly activities are properly used in the schools like, constructing ramps, toilets facilities ,giving school bags, books, uniforms, scholarships etc. some of the schools are not having ramps and toilet. And some schools are having these facilities are not maintaining well and most of the schools are not having water facilities for the toilets. Because of these problems especially PWD girls are find difficulties to go to the school. We have listed all these problems and gave memorandum to the block educational officer for to attend all these problems.

CHILDRENS DAY CELEBRATION: Children's day celebrated in 1 villages in collaboration with the local schools, Grampanchayat Asha workers Health workers and ngo's . Competitions were conducted for the children with disability. The normal children and the teachers encouraged the differently able children in the school. The school managements were very happy and grateful to the project for arranging and collaborating with wonderful programme for the disabled. Food and prize distributed by project and school. 25 students participated the programme .

HOLIDAY CAMP; holiday camp conducted in the headquarter's of H.B.Halli and Hadagalli taluk .more than 75 children have participated from different villages. Awareness given to the students about Hygiene ,First aid, Personality development ,Disability, , Action song etc, also conducted debate about the advantages and disadvantages of mobile phone by the resource persons .Sports meet also conducted for the PWD children. The participants were very happy and they appreciated the project service and requested to conduct programme like this in the coming years also .Prizes were distributed for the winners 25 children attended the Holiday camp at Don Bosco . They were given defferent entertainments like Good manners and ethicates Spoken English etc.

. **COMPUTER TRAINING PROGRAMME:** More than 12 PWD students are under going computer training programme in different training centers. The government is providing free education for all these students. so the PWDS are very happy and they are very grateful to the government authorities for arrainging like this training programme.6 PWD completed their training.

ECONOMIC REHABILITATION

PHYCIALLY HANDICAPED PENSION 160 Newly filled application were given to the taluk office for PHP .Out of which 140 were sanctioned .In consultation with the Thasildar the project were able to get PHP within a short period of 45 days to 3months. 95% of the PWD and PAL in the target area is getting with the help of the project staff.

OAP AND DWP: 53 Old people including widows are getting .RS. 500 from the government with the help of the project staff. Applications send to the taluk office for the new scheme called santhya Sureksha for the old age people who completed 75 years of age and abandoned by their children. Most of these beneficiaries are belonging to the same family of PWD and PAL.

BUSPASS RENEWAL: 263 existing bus passes were renewed during the year and 163 new bus passes got sanctioned for children with disability who are going to the school. Because of this bus pass many PWD are going to the colleges far from their villages and are attending meetings and celebrations which the project and DPO conducts.

VOCATIONAL TRAINING : Vocational training camps were conducted in 14 villages in which 996 Ladies 30PWD attended the training .Given training about making agarbthi ,cream ,vasline ,shampoo, preparing pickle etc .some of the participants those who learned are making these things at their home and earning some money and for their daily use.

PETTY SHOP: Economical support is given to 6 PWD's to have petty shops and earn their livelihood by doing small scale business. The shops running well and earning small savings in the bank and they are very happy and grateful to the project and its activities

SOCIAL REHABILITATION

PARENTS WORKSHOP: 3 parents workshops conducted for the 95 parents of mentally challenged children identification care, prevention and managements of mentally challenged explained well by the manager, coordinator and CBR staff. They also motivated the parents how to bring up their children with love and affection. The parents were very interested the workshop and co-operated well with the project.

Legal awareness Camp : Legal awareness camp conducted at Church campos in collobration with Advocates group and other NGO There were 85 parents and PWD participated

District level PWD Meeting : Rotary club ,PAD Bangalore , 52 PWD from H.BHalli and Hadagali motivated about PWD Act, Job orientation Problem solving

GRAMAPACHAYAT MEETINGS: Project staff arranged meetings in grama Panchayat in order to collect information about the benefits and reservation and rights of the PWD. The meetings conducted along with the panchayat president, secretary and other members in the Panchayat. The discussion was a part of the meeting where the project staff and PWD can ask questions to the Panchayat members. The project found it is very useful and some of the Panchayat are misusing the money which is the right of PWD.

INTERPERSONAL COMMUNICATION: Project staff gives interpersonal communication to the disabled to bring them out from all their psychological problems, depression and inferiority complex. 6250 disabled including PAL had this kind of counseling and many were relived from their problem and leading a normal life.

HOUSE SCHEME (ASHARAYA MANA) : 41PWD including PAL got the house scheme from the state government in H.B.Halli and Hadagali taluks. Out of that 35 houses had been constructed. With the full support if the taluk panchayat executive officer and zilla panchayath CEO our project was able to get this good number of houses with out any difficulty. Some of the disabled constructed better houses spending money from their pocket along with the Govt. scheme of 100000.

LEGAL AWERANES PROGRAMME; Project in collaboration with other NGOS conducted a legal awerness programme for the parents of mentally challenged was conducted. The right and benefits of mentally challenged explained by the lawyers and judge.

CELEBRATIONS

WOMENS DAY CELEBRATION: Women's day celebrated in H.B.Halli and Hadagali taluk in collaboration with the different women's group and school teachers. The group's leaders were ready to conduct this programme in their village itself. And they met the expenses of the programme like, food, stage, mike, chairs and sports meet for the group. The resource person advocate vishalakshi motivated group about their rights and Women Act. Then public meeting started. Bank managers, lawyers, Panchayat members local leaders, school teacher's etc..were present. All the guests appreciated well about SHG 's and bank managers assured subsidy loan for some of the groups. And they encouraged and congratulated the ladies to conduct this programme. The School children performed a skit about the importance of a girl child in the family and society, dance, signing, mono act, etc .after the programme food provided for all the participants. And the prizes distributed for the sports meet winners by the project. All people and the participants were very happy and cooperated well for all the programme .In collaboration with School teachers Panchayat people Asha worker

675 Ladies from different villages of SHG . distributed Prizes and food .

INDEPENDENCE DAY CELEBRATION: The project celebrated Independence Day in both H.B.Halli and Hadagalli taluk the villages to create patriotic spirit in the children for the nation and to participate in the national celebrations. 60 children participated in the programme .Awareness created about children's right.

WORLD DISABLED DAY CELEBRATION:

The project in collaboration with SHG ,Nandhipur swamji ,Renuka School and DPO,celebrated World Disabled on December at Hagaribommanahalli and Hadagali in collaboration and all the SHG in joined hands. and they have shoulder the expenses of food, shamyana sound system etc . There were 980 people attended it. Awareness given to the public about the rights and benefits of PWD. By project manager and CBR staff. Cultural and sports meet were conducted before were distributed prizes for the winners by the project . The aim was to makes known about the SHG group and they are differently able in many ways it was a chance for them to make decisions and to make a programme of their own . .Grama Panchayat secretaries ,PDO and other NGO, BRC were the chief gusts for the programme.They all appreciated the project services and assured their support and co-operation for the govt benefits. Skit conducted by the PAL and PWD about disability and Leprosy.

ANTI Leprosy Day Celebration : In collaboration with School teachers , Panchayat leaders and SHG there were 30 PAL and 45 other participants . prizes for the winners distributed by the project food given by the school.

SELF HELP GROUP DETAILS

SHG MEETINGS: Project staff visit to every self help group both PWD and women SHG twice in every month. During the visit the staff gives guidance and suggestions to improve the SHG activities. Also during the meeting the staff verifies all the documents such as minute's books, bank book, attendance register, details of saving and loan etc. In the meeting there will be discussion on various topics and giving information about the benefits and other programme in due course.

SUBSIDY LOAN AND REVOLVING FUND FOR THE SHGS

18 PWD SHG got subsidy loan during the year in hadagali taluk 2 in H.B halli improve their economic condition from the taluk Panchayat. Each group got RS. 300000 In which the half amount of money they have to repay it. 1 women SHG also got subsidy loan of RS. 200000. With these money the both group started business, animal husbandry, constructed house, agriculture work etc. To improve their economic status. Some of them are improved very well in financial savings. Also general loan was given to two women SHG who profited well from the loan. And 3 PWD groups and 9 women group have received rupees 10000 as a revolving fund.

NEW SHGS: Project staff formed PWD SHG and women SHG during the year, 8 PWD SHG and 19 women SHG in Hadagalli taluk and 1 PWD SHG and 3 PWD SHG re-formed in Hagaribommanahalli taluk. Other SHG groups are approaching the project staff to form SHG in their villages as they found discipline, order and, unity in the project formed SHG

.VOCATIONAL TRAINING FOR THE SHG MEMBERS: Project arranged 14 vocational training for the both SHG's in both taluk. Training like candle making, agarbathi, soap, shampoo, Vaseline, face cream, pickle making, saree printing, basket making etc. some of members are making agarbathi ,Vaseline, pickle for their home use and sales in the market also .

AIDS day celebration HIV AIDS - Day celebrated with rally by 250 school children participated and awareness created to the public.

MONTHLY MEETINGS:

Every month DPO conducts monthly meetings to discuss and solve their problems of PWD and prepare new plans and programme. Various problems are discussing in the meeting also information's are being given about the Govt. benefits and reservations in due time.

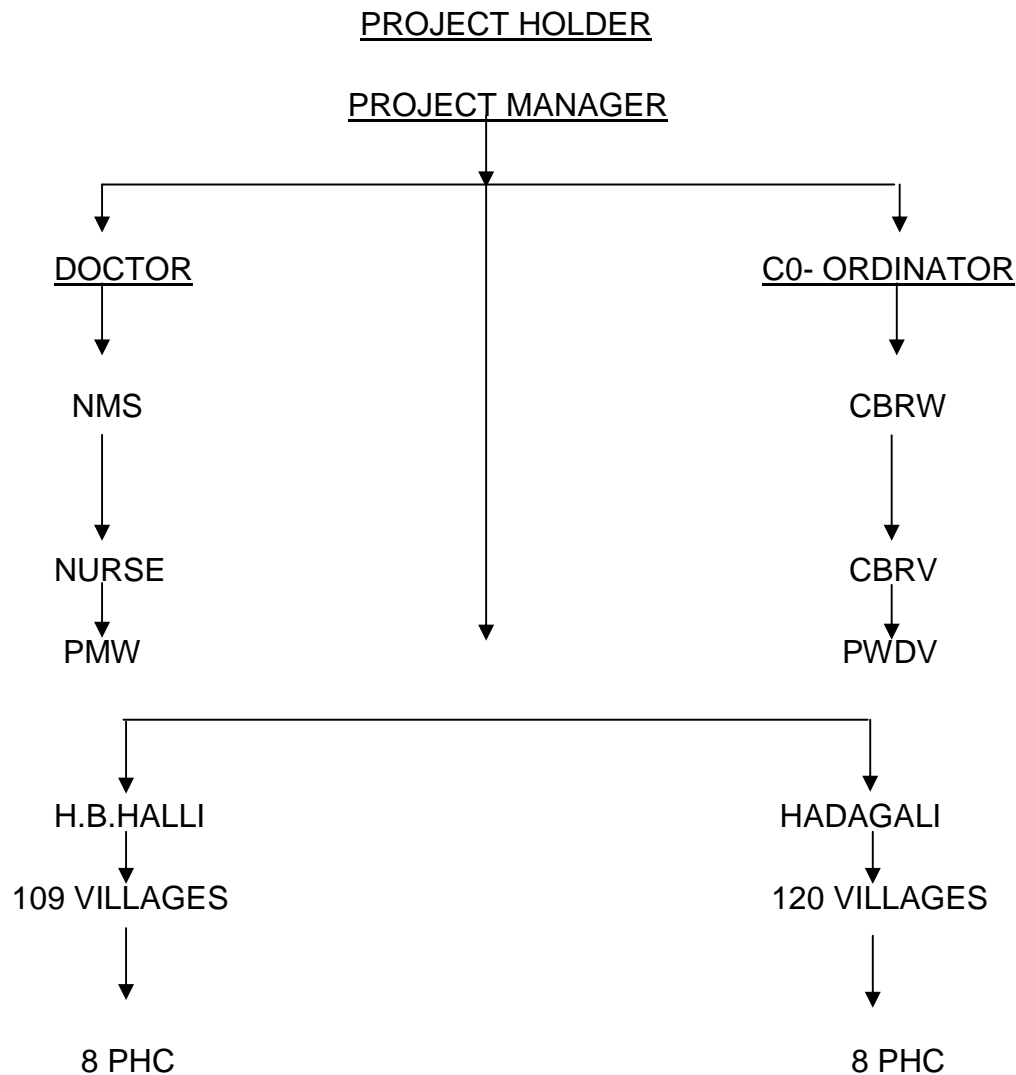
LEADERSHIP TRAINING: A leadership training programme was conducted by the state level disabled federation in collaboration with the project and SHG 80 PWD including PAL attended the programme. During the programme the resource person was explained well about the discipline and order are important for leadership . The training included group work, discussion, and presentations. It was a useful training for the disabled in the taluk. This event enlightens the knowledge of the PWD.

RALLIES AND STRIKES: DPO had made 10 strikes and rallies in both taluks demanding BPL card for all the disabled, IDENTITY CARD CAMP for the disabled, to reduce the bus pass money, corruption in the house scheme, issuing duplicate ID card for the normal people and to construct ramp in the public places like bus stand, hospital, railway station, govt .offices etc. The demands and petitions were given to the chief minister, district collector; state disabled commissioner CEO, EO, Tahasildar, DD, CDPO, KSRTC department etc. As a result constructed ramp in different places. During the construction of the house for the PWD (under Rajeev Gandhi house scheme) the gramapanchayath members bribing the PWD before releasing money from the bank. So DPO reacted to this problem and strict conditions were made to the taluk panchayat and grama panchayat. As a result many of the gramapanchayat secretaries were suspended from the job and many disabled were able to get full amount of money RS.30000 which was their due.

AWERNESS ON DISABLED ACT 1995: Project in collaboration with the DPO conducted a training programme for the disabled on the topic disability act 1995.Mr.Suresh kustigi from state level federation was the resource person. He explained the act chapter by chapter. Around 150 disabled attended the training programme.

PROJECT STRUCTUR -The target area consists of 220 villages of both taluks H.B.Halli and Hadagali which divided in to 16 units consists of 20 to 25 villages. Each unit taken over the charge by a CBR worker. CBR worker directly supervised by the project -co-coordinators. The whole project is monitored by the project manager.

ORGANIZATION CHART



SIGNIFICANT CHANGES OBSERVED IN PWD FAMILY AND COMMUNITY

- PWD'S are able to plan out programme and are taking decisions for their better life.
- PWD in SHG's are coming forward to arrange public programme in their villages as well as in taluk level.
- Quality of life of PWD and family improved through their participation and social inclusion.
- Family and community are giving due respect to the PWD and they are encouraging them by accepting their different abilities.

- PWD'S are well educated in the target area .many are going for higher education and govt. jobs.
- PWD, family and community are approaching the project for information's, suggestions and for various helps

MAJOR ACHIEVEMENT

- ❖ DPO, SHG is playing a great role to eliminate the corruption and bribing which are the major causes of the poor economic condition of the PWD.
- ❖ Project is well known in the district and the project is identified by the govt. officials for conducting various programmes.
- ❖ PW, Community and family are co-operating well with the project.
- ❖ PWD are coming as volunteers for any programme that the project, other NGO'S and govt .conducts in the district.
- ❖ Women SHG are taking more interest in all the activities of the project like conducting Medical camp ,Nutrition camp, Health awareness camp and women 's day celebration etc. They also shoulder the expenses of the programme with the project

LESSONS LEARNT

- Net working and community participation is one of the easiest way to approach people and the government officers.
- Improved community participation voluntarily.
- It is easy to give awerness to the people through DPO and both SHG;S.
- Unity and co- operation among the disabled can do any thing and every thing whatever they discern.

KEY ISSUE

The project given much important during the year to make all the public places more disabled friendly by constructing ramps and to bring down the govt. offices to the down floor which is in upstairs.

1. Project along with DPO worked hard to eliminate corruption towards the disabled that is bribing, identity cards given to the false disabled (Normal people).

SECTORAL OVERVIEW

HEALTH SECTOR: To reduce the magnitude of the disability, to prevent secondary deformities and preventable disabilities. Project staff facilitated to carry out the medical intervention like referral, follow up, distributed aids and appliances, camps and medicines given. Project staff trained PWD and family members in therapeutical skills. Persons affected with leprosy were provided medical interventions like follow up services and rehabilitation. Following table shows the activities conducted by the project to adhere above mentioned objectives.

H.B.HALLI			HADAGALI	
ACTIVITY	NUMBER	BENEFICIARY	NUMBER	BENEFICARY
Survey and new case	27	240	17	265
Case file	350	350	480	480
Medical camp	14	1069	2	75
Nutrition camp	4	128	2	85
Identity card camp	125	405	54	270
Medical certificate	125	405	60	350
Physiotherapy	180	180	65	65
Speech therapy	30	30	30	30
Mobility training	3	3	40	40
M.R parents workshop	1	95	2	80
A.D.L.S.Training	40	40	60	60
Tricycle	9	9	2	6
Wheelchair	10	10	32	32
Hearing aid			1	1
Crutches	5	5	2	7
Cain & caliper	1&2	3	-	-
Walking stick			3	15
Leprosy case follow up	65	350	45	45
MCR Chapel	30	30	16	16
IEC and IPC programme	450	450	300	300
Need assessment	150	150	30	30
Health talk	18	3560	650	2268
Health awerness programme	5	650	5	430
Surgery for PAL	5	5	3	3
Surgery for PWD	7	7	4	4

EDUCATIONAL SECTOR:

The children with disability who scored high marks in the SSLC and PUC level were not going for higher studies because of some or other reasons. So the project motivated the children and their parents to send them for higher studies. So many are doing their higher studies in different colleges by the Economical support of the project and by getting scholarship. The activities of the educational sector as follows.

H.B.HALLI			HADAGALI	
ACTIVITY	NUMBER	BENEFICIARY	NUMBER	BENEFICIARY
Non- formal education	150	12005	50	50
Special school	5	5	2	2
Scholarship	50	50	90	90
School visit and collected information about ramp and toilet facilities	8	35	8	80
Educational awerness	3	1003	120	120
Integrated school admission	6	6	3	3
			-	-
Summer holiday camp	2	45	2	75
Children's day celebration	1	40	1	85
Support for the higher studies	3	3	14	14
Uniform given	15	15	-	-
Legal camp for MR and MI	-	-	120	120

ECONOMIC SECTOR

The disabled are helped economically by the project for income generating activities. 60% of the disabled in the target area are living in poor conditions. But the project helps the disabled to get the maximum benefits from the govt. as well as from the non-governmental organizations. The activities which the project achieve under economic sector as follows

H.B.HALLI		HADAGALI		
ACTIVITY	NUMBER	BENEFICIARY	NUMBER	BENEFICIARY
PHP	60	60	40	40
OAP	10	10	5	5
DWP	-	-	-	-
LIC for MR	-	-	-	-
PWD subsidy loan	2	30	2	26
Revolving fund for the PWD group	1	20	1	20
Buss pass renewal	145	145	110	110
Vocational training	10	1200	7	110
Petty shop	1	5	2	2
Loan for the PWD from CDPO	1	15	-	-
Subsidy loan for the women's group	2	30	2	40

SOCIAL SECTOR

The project is being given much importance to the SHG by giving awareness training to participate in the CBR activities and come forward to get their rights. It is pleasant to hear that the PWD voluntarily approaching the project and the staff to form SHG in their villages. It shows their willingness and enthusiasm to fight for their right and come up in life. The activities done in social sector .

The ALC Rehabilitation brought ray of hope in Akash

CASE STUDY :

A boy Akash born with cleft foot in Hadagali at Ramaswamy plot first child of MR.Ramesh and Deveeramma .The project staff visited his house and motivated his parents to give him physiotherapy for 6 months and his parents followed the advice and doing the physiotherapy regularly and gave him special shoe to improve his mobility. After 6 months he was able to straighten his leg and stand by himself and move around now his parents are very happy and appreciate the project for its support and service to the poor and marginalized.

New life of Thippesh

15 years old Thippesh c/o grandmother Hulugamma at OLD H.B.Halli in H.B.Halli tk When he was a young boy while they were playing ,he had a shock from electricity he lost his hand and could not to open the mouth. He was unable to eat and drink. He lost his mother and Father due to HIV, he had only one brother . at present he staying with his grandmother. the staff visited and supported him to do the mouth surgery, consulting with many doctorsand he had done the mouth surgery. Now he can open his mouth and he is able to eat and drink. his family and his relatives are very happy . After the surgery he is doing the small scale business to sell the vegetable , fruits, and ice-cream . he also is happy and expressed their gratitude to the project for the support.

Social Sector

ACTIVITY	NUMBER	BENEFICIARY	NUMBER	BENEFICIARY
New PWD SHG	4	50	1	12
New women SHG	2	21	14	210
Interpersonal communication	4015	4015	1000	1000
Gramapanchayath meeting	4	56	4	250
Hob lie wise meeting for the PWD	2	420	-	-
CBR training	2	5	1	9
Parents workshop	1	95	-	-
Women's day celebration	1	175	1	200
UNCRP Convention awerness	-	-	-	-
Anti- leprosy day celebration	2	45	1	210
Disabled day celebration	3	630	1	200
Taluk level DPO convention	1	800	-	-
Training for the DPO about UNCRP	-	-	-	-
House for the disabled	35	125	10	150
DPO strike	4	2000	6	1950
Independence day celebration	1	30	1	80
Disabled rally	1	250	1	300
DPO meetings	25	290	20	270
Legal camp	-	-	1	90
Identity card camp	2	602	2	350
Public meetings	4	350	1	150
DPO Press reporters meetings	2	1500	1	800
DPO court meet about duplicate ID card	-	-	-	-
DC meeting for the DPO	3	25	3	20

SELF HELP GROUP DETAILS OF PWD SHG IN H.B.Halli TALUK.

SL N O.	Name of the group	Village	Total members	WD	AL	Savings per head	Loan	Date of formation
1	Sri madevi	Hampasager	12	12	-	4300	Yes	10/4/2001
2	Swami Vivekandha	Chilukode	12	12		4050	-	18/9/2001
3	Vinayaka	Angasamudra	16	16		4100	Yes	10/9/2001
4	Arunodhaya	Yenugi	13	13		3200	Yes	26 /2/2003
5	DivyaJothi	Chilukode	11	11		4200	-	17/2/2003
6	Navachedhana	Moorgeri	12	12		3000	Yes	17/ 2/2003
7	Karibasava	Basapura	11	11		4020	Yes	20/11/2003
8	Chaithenia	H.B Halli	15	15		30000	-	3/5/2003
9	Renuka	Seeganahalli	11	11		3700	Yes	7 /4/2003
10	Puttegouda	H.G Halli	11	11	-	3700	Yes	2 /2/2004
11	Divya Jothi	Ulvathi	12	12		3150	-	2/12/2004
12	Bandi nageswara	Thamrahalli	15	15		4020	Yes	8 /6 /2004
13	Chethana	Madur	12	12		2020	-	2 /5 /2004
14	Arunodhaya	Hampasagar	16	6		4000	-	12/6 /2005
15	Palaniswamy	Basarukode	10	10		3200	-	20/10/2005
16	Ashakirana	Anakal	12	12		3200	Yes	23 /10/2005
17	Nethaji	G. Kodihalli	12	12		2900		12/11/2005
18	Sidheswara	Hoskeri	12	12		3080	Yes	27/11/2005
19	Karibasava	Mahimavinahalli	15	15		4200	-	27/11/2005
20	Vinayaka	Chilukode	15	15		4000	-	4/7 /2006
21	Pakeerswamy	Basarukode	16	16		3080	-	11/8/2006
22	Jagajothi	Bannikal	15	15		3400	-	2 /11/2006
23	Adhisakthi	Nadhipura	15	15		4000	Yes	15 /11/2006
24	Homebelaku	Hampasagar	14	14		4500	Yes	4 /1/2007
25	Ashakirana	Nelkudhiri	12	12		3700	-	11/1/2007
26	Ashakirana	Gaddikeri	12	12		3700	-	15/2/2007
27	Hombelaku	Bylalu	12	12		4000	Yes	15 /5/2007
28	Karibasava	Desmapura	12	12		4000	Yes	9 /7/2007
29	Maruthi	Belagunisi	10	10		3500	Yes	14 /7/2007
30	Annapurna	Sobatty	12	12		3100	Yes	4 /8/2007

31	Durgadevi	Krishnapura	14	14		3000	-	6/8/2007
32	Ashakirana	Yedrammanahalli	12	12		3100	-	4/10/2007
33	Putturaj	Hamppattana	14	14		2000	Yes	3/1/2008
34	Adhisakthi	Kadalabalu	12	12		2000	Yes	4/8/2008
35	Karibasava	Bannikall	15	15		1800	Yes	4/8/2008
36	Pandurenga	Hampapattana	20	20		2000	Yes	11/8/2008
37	Navasakthi	Hampapattana	12	12		2000	Yes	11/8/2008
38	Kariamamma	Ulavathi	10	10		1900	-	6/9/2008
39	Manjunatha	Byasigaderi	13	13		1050	-	7/9/2008
40	Lekshimi	Bannigola	20	20		1900	-	23/9/2008
41	Maruthi	Rameswarabandi	10	10		1200	-	14/9/2008
42	Spurthi	Moorigeri	15	15		1700	-	2/12/2008
43	Keerthi	Oblapura	12	12		1040	-	7/2/2009
44	Iswarya	Ulavathi	10	10		1500	-	18/5/2009
45	Vallabha	Muttuganahalli	13	13		1800	-	19/5/2009
46	Hombelaku	Kadalabalu	10	10		1400	-	6/6/2009
47	Spurthi	Uppargetta	12	12		1010	-	5/12/2009
48	Gengaamma	Hampasagar	12	12		1020	-	15/12/2009
49	Sevaletha	Rauralthanda	12	12		500	-	7/10/2010
50	Adisiddeswara	Kadalabalu	12	12		9600	-	5/12/2014
51	Shivanaick	Bendihalli	12	12		9600	-	5-1-14
52	Honnamadevi	Desmapura	12	12		9600	-	3-5-14
53	aiswaria	Ulvathy	12	12		9600	-	1-1-14

WOMEN SHG IN H. B H ALLI

SL NO.	NAME OF THE GROUP	VILLAGE	TOTAL MEMBERS	LOAN	SAVING PERHEAD	DATE OF FORMING
1	Mahadevi	Kurudugadi	11	Yes	4900	3-3-01
2	Marikamba	Kurudugadi	12	Yes	4800	3-7-01
3	Keerthi	Kodihalli	12	Yes	3800	23-1-06
4	Maruthi	Krishnapura	10	Yes	3200	6-10-08
5	Saibaba	Kurudugadi	12	Yes	4050	6-10-08
6	Daneswari	Chilugodu	14	Yes	3000	4-7-07
7	Lekshmi	Kurudugadi	12	Yes	3200	2-7-08
8	Divyajothi	Kurudugadi	10	Yes	3600	18-2-07
9	Iswria	H.B.Halli	13	Yes	390	25-11-11
10	Aswani	-do-	5	Yes	4400	10-12-10
11	Kaveri	-do-	10	Yes	3000	10-12-09
12	Kaveri	Edrammanahalli	13	Yes	1300	31-12-08
13	Iekshmi	Hampasagar	13	Yes	3800	5-1-09
14	prathibha	Chiligode	14	yes	300	24-1-06

15	Sonia	Murugeri	15	Yes	3200	2-4-06
16	Karthika	Kodihalli	12	Yes	3800	23-1-06
17	Kithur rani	Dasmapura	15	Yes	2900	12-3-07
18	Mahalekshmi	Chilugode	15	Yes	2750	24-1-06
19	malagammadevi	EniBasapura	12	yes	2500	17-1-2011

JOB RESPONSIBILITIES OF THE STAFF:

Project holder ----- Policy making, planning, budget making, decision making and
Delegating

Co –ordinator ----- Establish the planning in the field along with the manager and
the field staff. They are the immediate supervisors of the field
workers, coordinating all the activities of the staff and giving
suggestions about the difficulties and monitoring the field staff.

Doctor ----- Assessing, treating, and referring the PAL and PWD.

Nurse ----- Assist the doctor.

CBRW & PMW ---Identification, survey, awerness, follow up, physiotherapy,
record maintaining, referring the cases to the NMS and Co- ordinator

CBRV ----- Field visit, awerness, fighting for their rights.

MONITORING AND EVALUATION

Project has got an effective system of record keeping action plan, case history collection, need assessment, keeping reports and registers, updating ,the case file according to the field visit and progress of the client, monthly review meetings etc. quarterly, half yearly, and annual reports are filed in every year. Monthly reports, tour programme of each field staff is being keeping in the office file. Project manager and consultancy review and evaluate the progress of the project activity. Co- ordinator evaluating each workers field activities guiding and giving suggestions and ideas for the better and effective running of the project

SUSTAINABILITY

Project has been sustaining the CBR programme in the target area, SHG groups were formed and strengthened for this purpose. The DPO is strengthened by the project with different trainings, vocational trainings, and income generating activities. PWD'S are come forward to form PWD group in the villages, and invested money in the bank for cultural programme and national celebrations .DPO is collecting local funds and celebrating functions and conducting meetings etc. Taluk level DPO is taking much interesting and hard working to form a district level federation. The people will carry on the values of the project.

ACKNOWLEDGEMENT

Project has achieved above mentioned achievements during the year 2013 project express its gratitude's to all those who have contributed for the achievements. Project is highly thankful to all for its financial and technical support of it. Also express gratitude to PWD, family, community and CBR staffs and DPO for their valuable contributions. Project looks forward all your support for the future.

Skit by PWD & PAL



**Disabled day with other NGO
And GOT**



Sheep rearing



Sports meet for PWD



Mobility training



Revolving fund



Tailoring machine

**Subsidy loan for
women SHG**



Physiotherapy follow up



Petty shop



APPENDI

PWD	Person with disability
DPO	Disabled people organization
GO	Government organization
NGO	Non governmental organization
PAL	Person affected by leprosy
OH	Orthopedic handicapped
SH	Speech and hearing
MR	Mentally retarded
MI	Mentally illness
VI	visually impaired
SHG	Self help group
CBR	Community based rehabilitation