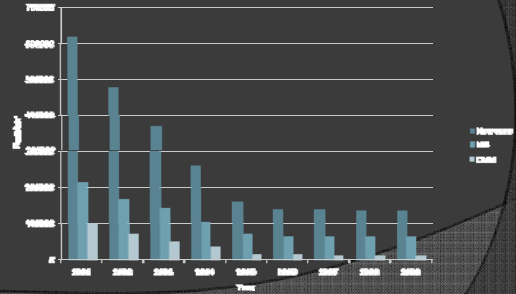


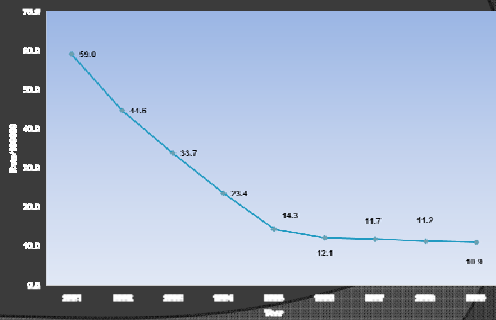
LEPROSY CONTROL IN INDIA: CURRENT STATUS, OPPORTUNITIES AND CHALLENGES

KRISHNAMURTHY

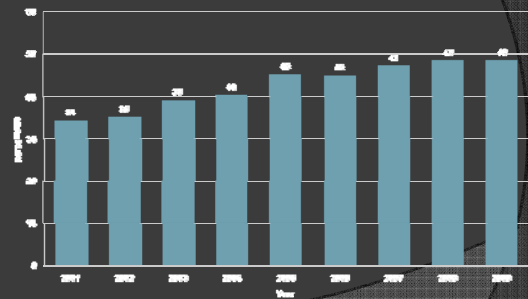
Trend of new, MB, child cases:2001-2009



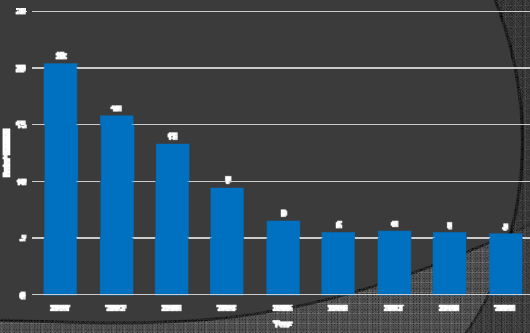
Case detection trend:2001-2009



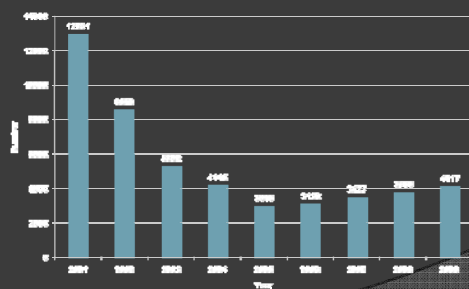
Trend of MB proportion among new cases:
2001-2009



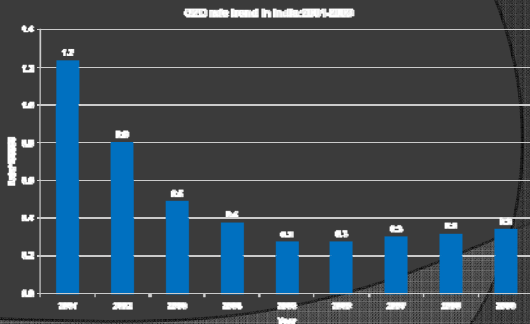
Trend of MB rate: 2001-2009



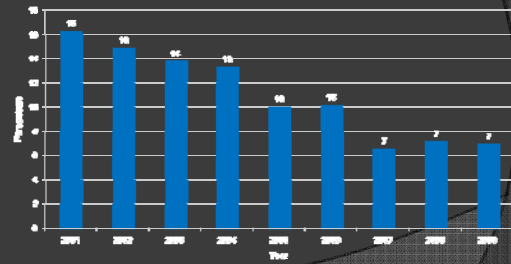
Trend of new G2D (no.): 2001-2009



Trend of new G2D rate: 2001-2009



Trend of child proportion among new: 2001-2009



Change over time (10 years)

- 78% reduction in new cases
- 24% reduction in MB
- 91% reduction in Child
- 68% reduction in G2D

Changes in Leprosy trend

Year	New	MB	Child	G2D
2001				
2002	-23	-21	-30	-34
2003	-23	-14	-28.5	-38
2004	-29	-27	-32	-22
2005	-38	-30	-53	-27
2006	-14	-14	-12	+4
2007	-1.1	+4	-36.5	+11
2008	-2.5	-0.05	+6.2	+8
2009	-0.3	-0.3	-3	+9

Initial End.	New case detection	New G2D
High (8)	<ul style="list-style-type: none"> Decreasing (2) Increasing (4) Decreased & static..... (2) 	Decreased and Static-1 Decreased and increasing-1 Decreased and increasing-2 Decreased and Static-2 Decreased and increasing-1 Decreased and Static-1
Moderate (3)	Decreased and static(3)	Decreased and increasing-2 Decreased and Static-1
Low (4)	Decreasing...(1) Decreased and Static.....(3)	Increased and constant-1 Increased and decreasing-1 Increased and static-1 Decreased and increasing-1

Changes- health sector

- Decentralised planning
- More funds, flexible
- Strengthening of human resource and infrastructure
- One health society
- Involvement of community- volunteers, incentives, committees

Challenges

- ◉ No integrated planning
- ◉ Decentralised planning- not yet a reality
- ◉ Underutilisation of funds
- ◉ Bureaucracy
- ◉ Lack of coordination
- ◉ Lack of cooperation with other departments
- ◉ Incentives not paid

Leprosy

- ◉ Integration
- ◉ Own funds
- ◉ New case detection over prevalence
- ◉ Decentralised planning-
- ◉ Prevention of disability- priority
- ◉ National review
- ◉ Partnership

Challenges

- ◉ Political commitment
- ◉ Decentralised with central directive?
- ◉ Poor utilisation of funds
- ◉ District nucleus- only in 200 districts
- ◉ No referral service
- ◉ Prevention of disability- a shadow
- ◉ Partnership- what?
- ◉ Sustainability of expertise